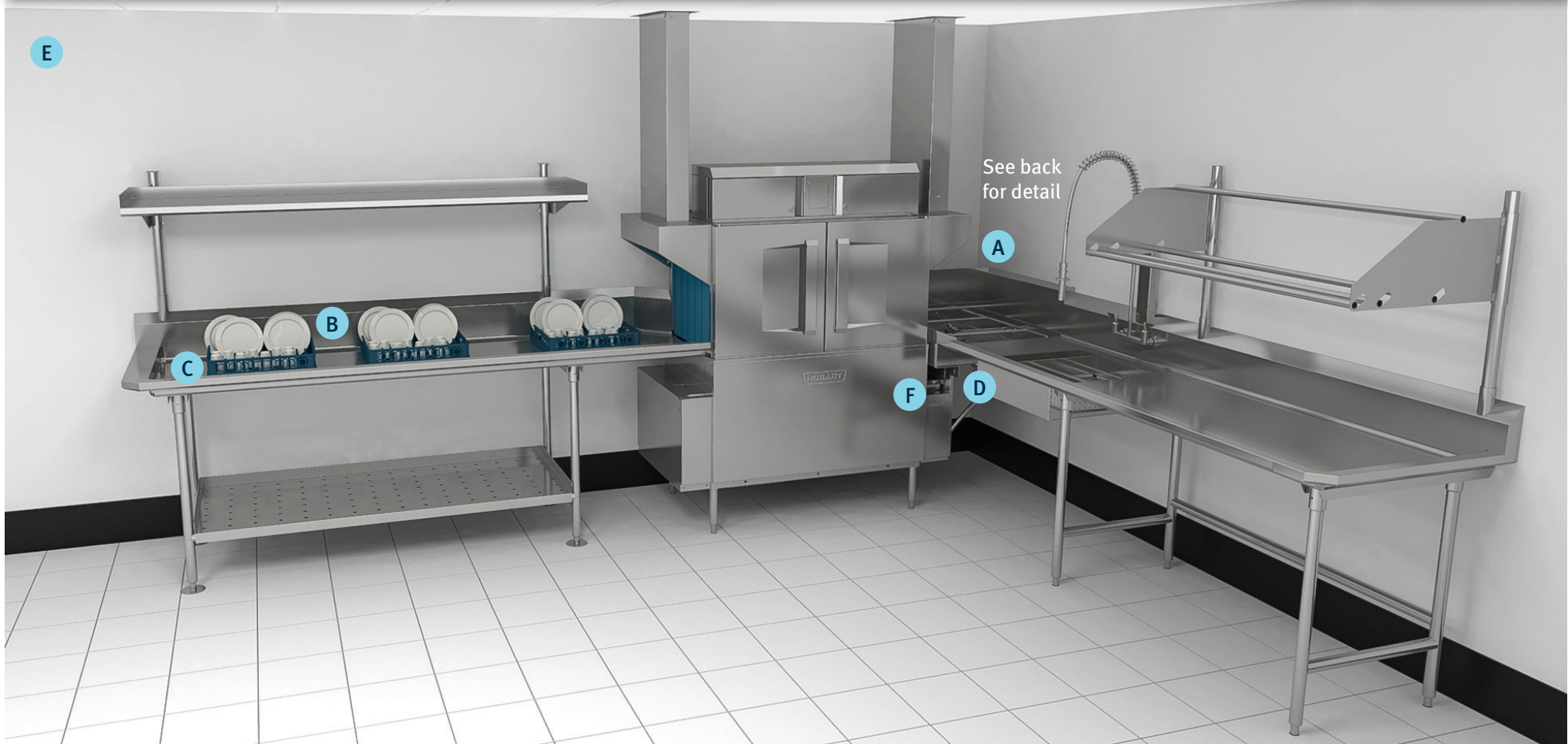




CL Installation Guidelines – Corner Installation



A FOR CORNER APPLICATIONS, A MINIMUM OF 23" OR 30" is required to accommodate a side loader (SL23 or SL30). SL30 must be ordered if washing sheet pans. Short vent hood is required for load end when using a side loader.

B HOBART RECOMMENDS MINIMUM 60" for clean table (not including rolled rim/end splash) to accommodate three racks.

C TABLE LIMIT SWITCH pauses operation when clean dish table is full, prolonging the life of the conveyor drive mechanism.

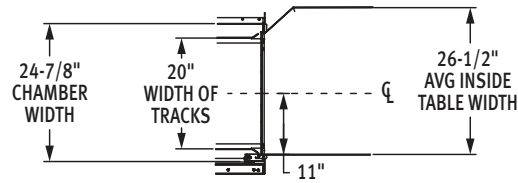
D STANDARD TABLE HEIGHT 34" AFF (per spec sheets)

E ROOM CONSIDERATIONS
Delivery Path (Doorways/Elevators) should have a minimum clearance of 30⁷/₈" W x 68¹/₂" H

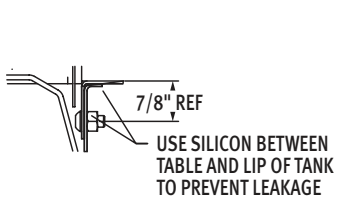
F DISH MACHINE TABLE TO TABLE CONNECTION DIMENSIONS
For CL44, inside tank dimension is 44"
For CL66, inside tank dimension is 66"

Dishmachine Table Connections

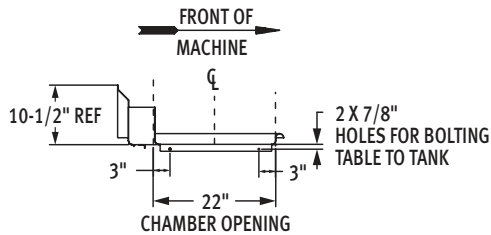
CLEAN DISH TABLE CONNECTION DETAIL



SUGGESTED TRACK AND TABLE LAYOUT

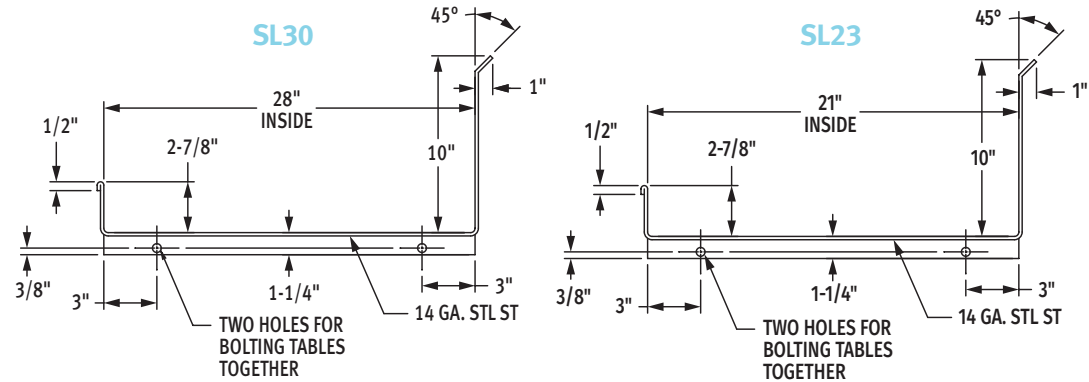


SECTIONAL VIEW SHOWING TABLE CONNECTIONS

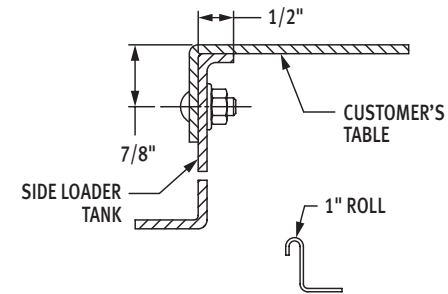


VIEW SHOWING HOLE LOCATIONS IN TURNED DOWN PORTION OF TABLE

SIDE LOADER TABLE CONNECTION DETAIL (LOAD END)



VIEW LOOKING TOWARD SIDE LOADER TANK THROUGH CUSTOMER'S TABLE



SECTIONAL VIEW SHOWING TABLE CONNECTIONS



Let's Talk

We're ready to help you optimize your dishroom operations.
Call 888-378-1338 and talk to one of our experts today.

SCAN TO FIND OUT MORE
www.hobartcorp.com/CL



HOBART

Hobart
701 S. Ridge Ave. Troy, Ohio 45373
www.hobartcorp.com

ITW FOOD EQUIPMENT GROUP
F48952 (03-24) ©2024 Hobart